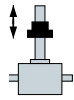


# Everything from a single source GSZ & KSZ | 2,5 kN



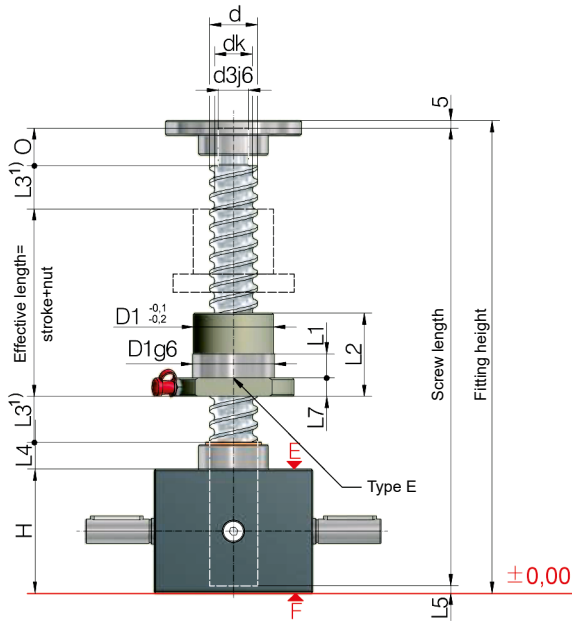






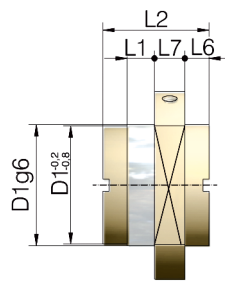
# R Screw jacks 2,5 kN

GSZ-2-R-KGT | Ball screw jacks | rotating screw

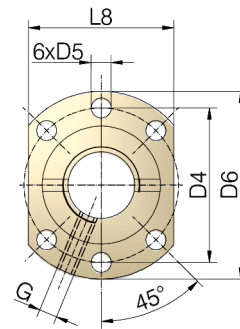


### Position of the flange nut:

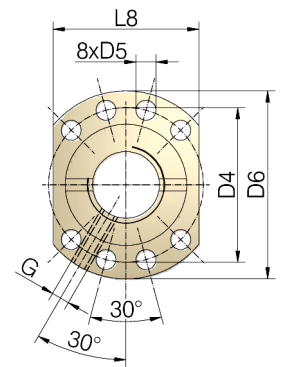
G = flange gearbox side (as shown)  
S = flange screw side



Type S



Hole pattern 1  
to DIN 69051



Hole pattern 2  
to DIN 69051

Screw jacks	KGT Screw		Stroke per drive revolution		KGT Load rating kN		Nut		Lubrication hole	Axial play max <sup>3)</sup>
	ØxP	RN	RL	dyn. C <sup>2)</sup>	stat. Co=C <sub>oa</sub>	Type	Hole pattern	G	mm	
GSZ-2	16x5	1,25	0,31	10,1	12	E	1	M6	0,06	
	16x10	2,5	0,63	11,1	12,9	E	1	M6	0,06	

Screw jacks	KGT Screw		Dimensions mm														
	ØxP	d	dk	d3j6	O	H	D1	D4	D5	D6	L1	L2	L3 <sup>1)</sup>	L4	L5	L6	L7
GSZ-2	16x5	15,5	12,9	10	12	50	28	38	5,5	48	10	42	15	11	3	10	40
	16x10	15,4	13	10	12	50	28	38	5,5	48	10	55	25	11	3	10	40

## Technical data series GSZ-2-R

**max. compressive/tensile force, static:** 2,5 kN (250 kg)  
**Input speed:** 1500 rpm / max. 3000 rpm  
**Gearbox operating temperature:** max. 60°C, higher on request  
**Moment of inertia:** N: 0,047 kg cm<sup>2</sup> / L: 0,031 kg cm<sup>2</sup>  
**Input torque (at 1500 rpm):** max. 1,4 Nm (N) / max. 0,5 Nm (L)  
**Drive-through torque:** max. 9 Nm  
**Gear ratio:** 4:1 (Normal) / 16:1 (Low)  
**Housing material:** aluminium, corrosion-resistant  
**Worm shaft:** steel, case-hardened, ground  
**Weight of screw jack body:** 0,6 kg  
**Gearbox / Screw lubrication:** synthetic gear oil / grease lubrication

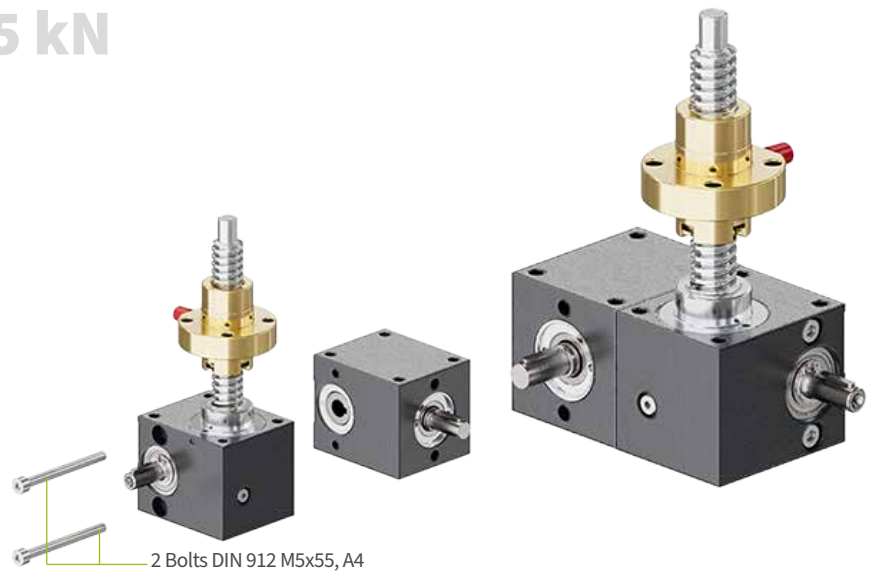
Because of the lack of friction, a holding brake is necessary: a motor brake or a spring pressure brake is required.  
**Screw:** 1.1213 (Cf 53), induction hardened and polished.  
**Pitch accuracy:** 0,05 mm / 300 mm

1) Depending on the control system and drive, the dimension L3 and L4 can be reduced at your own discretion. An extension may be required if a bellows or spiral spring is fitted.  
 2) Dynamic load rating to DIN ISO 3408.  
 3) Reduced play 0,02 mm available on request.

# Bevel gearboxes 2,5 kN

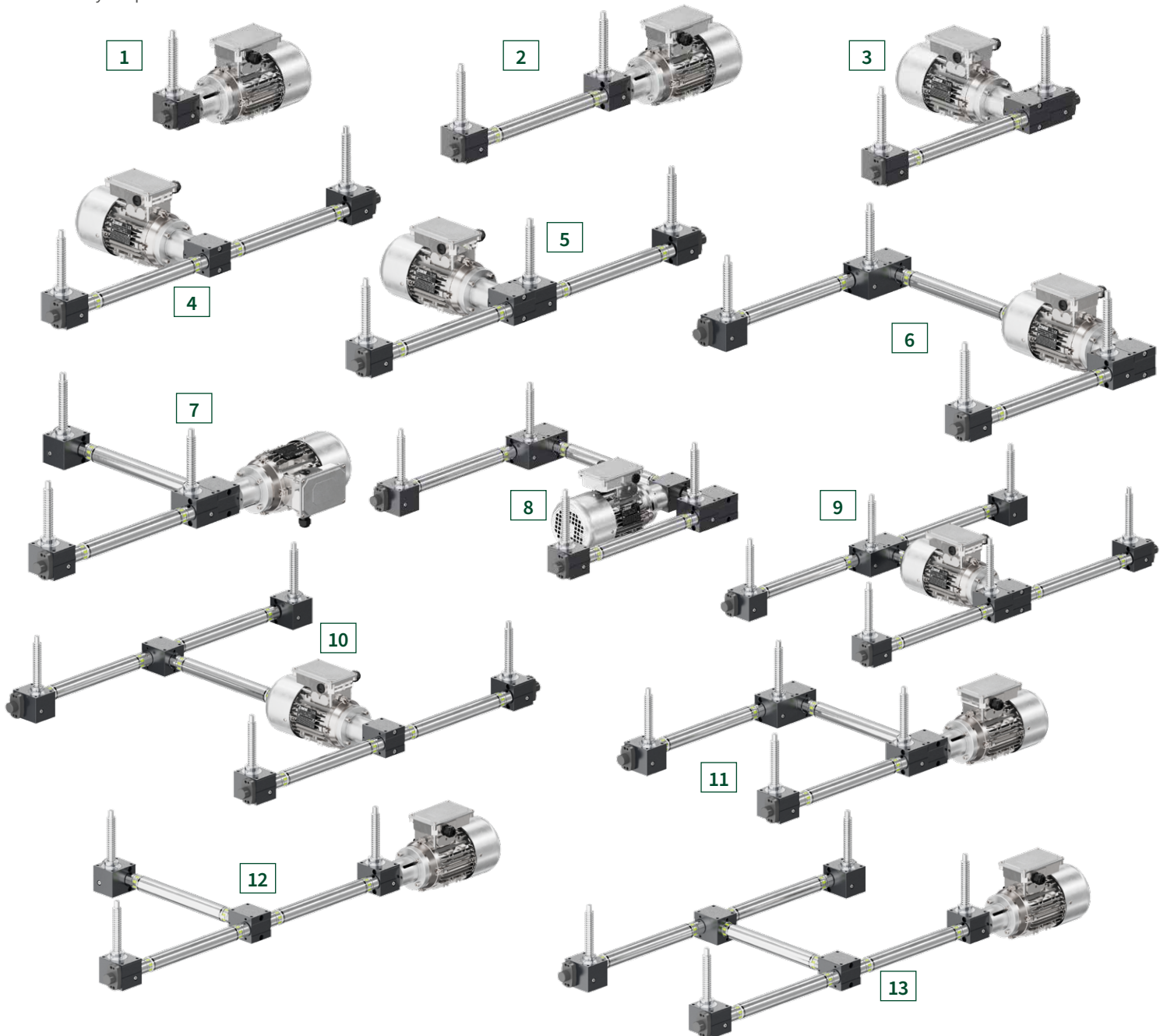
## KSZ-2

The KSZ-2 is a bolt-on gearbox and therefore where larger bevel gearboxes such as the KSZ-H series are used the layouts will be different.



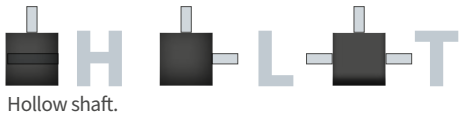
### Layout examples

Other layouts possible.





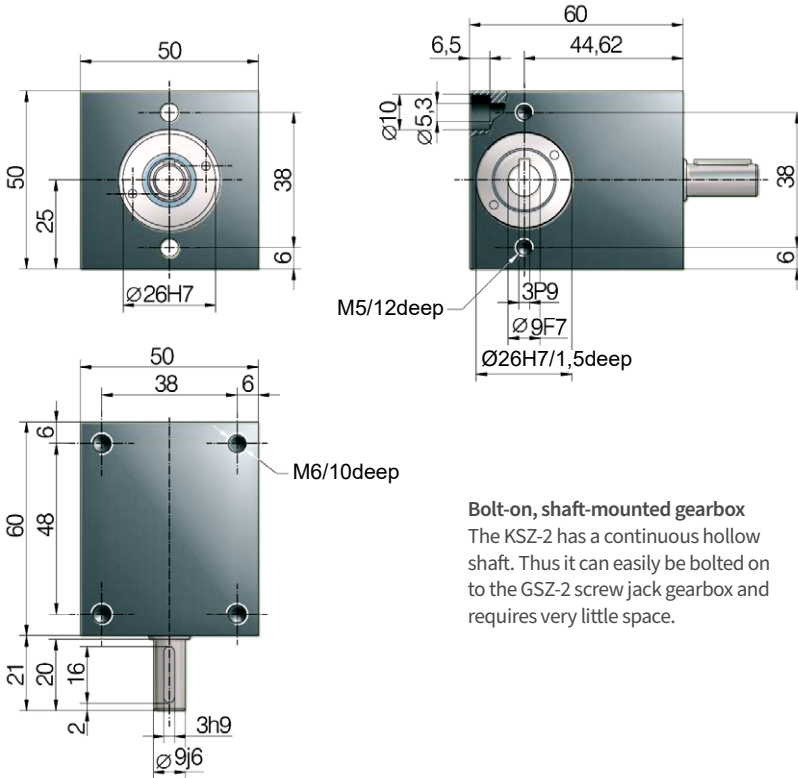
Spiral-toothed



Hollow shaft.

# Bevel gearboxes 2,5 kN

**KSZ-2**



M5/12deep

3P9

Ø9F7

Ø26H7/1,5deep

M6/10deep

**Bolt-on, shaft-mounted gearbox**  
The KSZ-2 has a continuous hollow shaft. Thus it can easily be bolted on to the GSZ-2 screw jack gearbox and requires very little space.



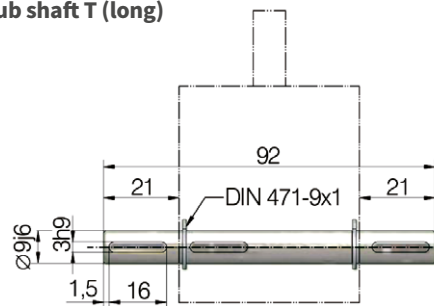
**Spiral-toothed**  
Spiral toothing ensures high torque and low running noise

## Technical data KSZ-2

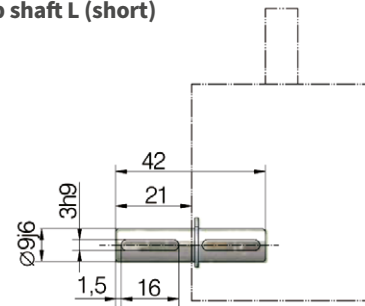
<b>max. compressive/tensile force, static:</b>	2,5 kN (250 kg)
<b>Input speed:</b>	1500 rpm / max. 3000 rpm
<b>Screw size standard GSZ-2:</b>	Tr 16x4 <sup>2</sup> (GSZ-2)
<b>Gear ratio:</b>	1:1
<b>Housing material:</b>	aluminium, hard anodised
<b>Worm shaft:</b>	steel, case-hardened, ground
<b>Weight of screw jack body:</b>	0,45 kg
<b>Screw lubrication:</b>	gear oil
<b>Duty cycle:</b>	40%
<b>max. torque:</b>	3 Nm
<b>Drive-through torque:</b>	max. 4,2 Nm



**Stub shaft T (long)**



**Stub shaft L (short)**



**Note**

Fitting a stub shaft allows the KSZ-2 to be used as a conventional right-angle gearbox.

Your enquiry  
is our drive



**ZIMM Group GmbH**

Millennium Park 3, A-6890 Lustenau  
T +43 5577 806-0, E info@zimm.com